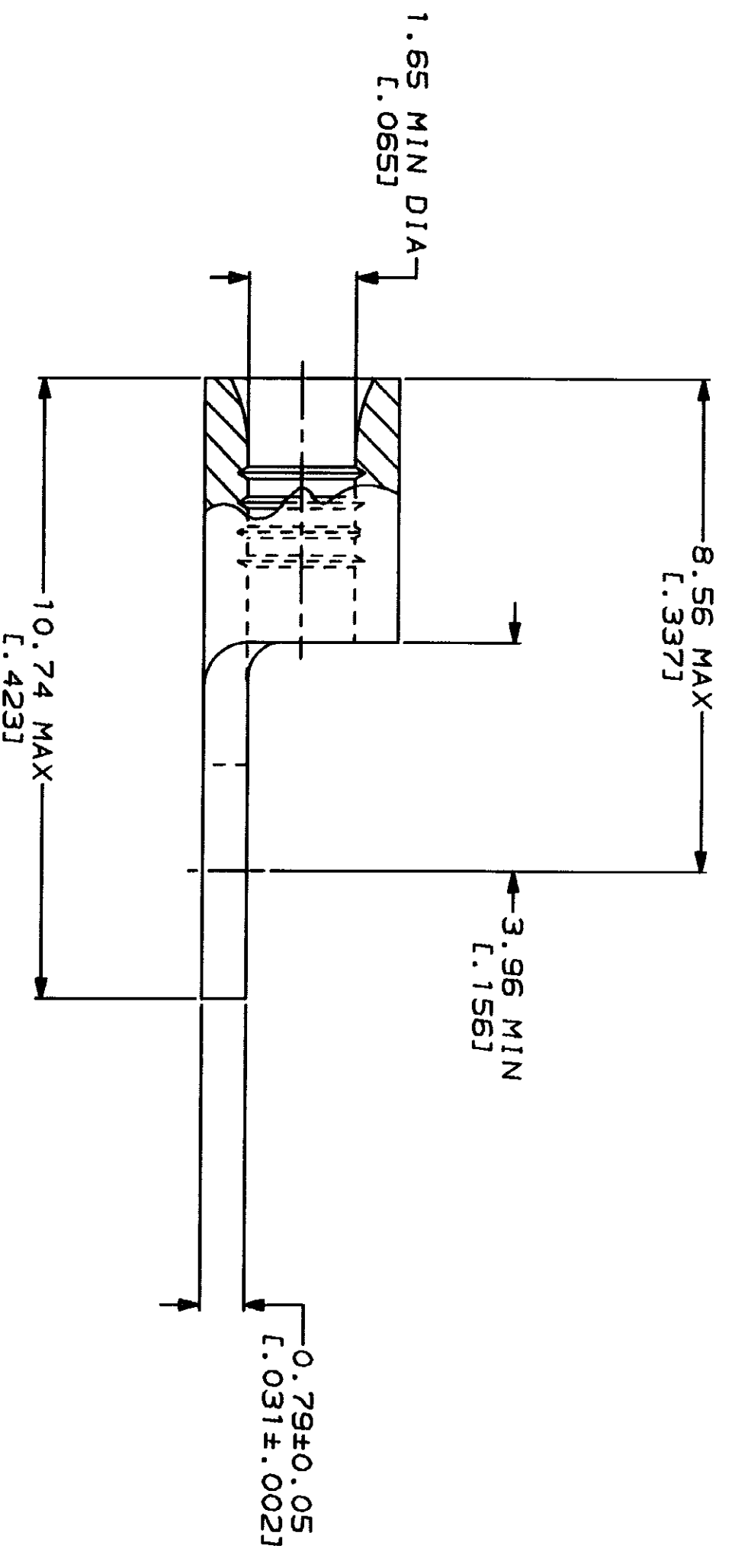
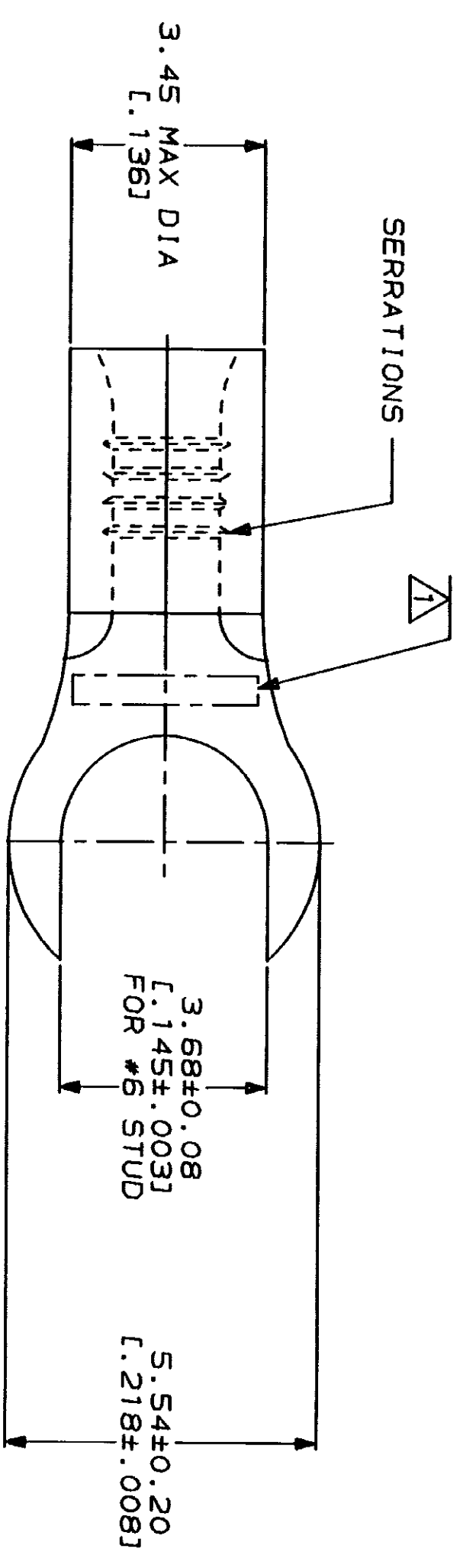


LOC	DIST	REV	ZONE	LTR	DESCRIPTION	DATE	APP'D
G	14		A		REVISED PER 0720-0230-93	2/28/94	DAF

METRIOR
 DIMENSIONS LISTED IN mm [INCHES]

AMP WIRE RANGE 22-16 AWG STRANDED	UL E13288 Listed
LR7189 Certified	MILITARY P/N AND CLASS
NOT CERTIFIED	NOT APPLICABLE

△ STAMP AMP 22-18* APPROX AS SHOWN
 22-16 TERMINALS ARE STAMPED 22-18 IN
 ACCORDANCE WITH MILITARY SPECIFICATION
 MIL-T-7928, COMMERCIAL WIRE RANGE IS 22-16



AMP INCORPORATED
 CUSTOMER SERVICE SYSTEMS

FOR ADDITIONAL PRODUCT INFORMATION OR COPIES OF DRAWINGS AND TECHNICAL DOCUMENTS	PRODUCT INFORMATION CENTER 1-800-522-6752
FOR APPLICATION TOOLING INFORMATION	TOOLING ASSISTANCE CENTER 1-800-722-1111
FOR ORDER ENTRY	1-800-526-5142

MAX RECOMMENDED OPERATING
 TEMPERATURE: 170°C MAX

VOLTAGE RATING:
 NOT APPLICABLE

WIRE CROSS SECTIONAL AREA RANGE,
 0.26-1.65mm² [509-3,260] CIR MILS
 STRANDED

THIS DRAWING IS A CONTROLLED DOCUMENT FOR
 AMP INCORPORATED. IT IS SUBJECT TO CHANGE
 AND THE CONTROLLING REVISION SHALL BE
 SHOWN IN THE LATEST REVISION.

DO NOT SCALE PRINT.
 UNLESS SPECIFIED
 DIMENSIONS IN mm - FINISHES -
 TOLERANCES ON 1
 2 PLC DEC ±
 3 PLC DEC ±
 ANGLES ±

MATERIAL
 COPPER PER
 ASTM B-152
 ANNEALED

FINISH
 TIN PLATE
 0.00254 [L.000100] MIN
 THK PER MIL-T-10727

DR 2-23-93
 TA BRINKMAN

CHK 2-23-93
 DA PATTERSON

APPD 2-23-93
 DE HILLER

APPD 2-23-93
 JL HECKLEY

APPLICATION SPEC
 WEIGHT -



AMP Incorporated
 Harrisburg, PA 17105-3608

TERMINAL, SLOTTED
 RING TONGUE, BUDGET

SIZE CAGE CODE DRAWING NO
 G 00779 G-323835
 SCALE 10:1

323835
 PART NO

CUSTOMER DRAWING
 SHEET 1 OF 1